

**Matoshri Education Society's**  
**Matoshri College of Education, Eklahare, Nashik**

**Feedback Analysis**

1. How do you rate the syllabus of the courses you have studied with the competencies Expected from the course?
2. How do you rate the relevance of the units to the course?
3. Rate the offering of the electives in terms of their relevance
4. How do you rate the evaluation scheme designed for each of the courses?
5. How do you rate the objectives stated for each of the courses?
6. Rate the electives offered with technological advancements.
7. Relevance of the Textbooks and reference books by their International recognition to the courses.
8. Rate the courses in terms of extra learning or self-learning considering the design of the courses
9. The syllabus is designed to bridge the gap between academics and Industry.
10. The usefulness of the course in terms of knowledge, concepts, vocational skills, Analytical abilities, and broadening perspectives.

Analysis :

In Session 2019-20 First Year 100 Students Provide their feed-back on curriculum. The percentage response for each of the question are depicted in the below given table.

Qus No	Excellent	Very Good	Good	Average	Poor
1	21.1	49.3	28.2	1.4	0
2	15.5	53.5	28.2	2.8	0
3	17.1	40.4	40.4	2.1	0
4	18.4	40.8	35.2	5.6	0
5	19.8	36.6	39.4	4.2	0
6	17.1	40.4	40.4	2.1	0
7	25.3	33.8	31	9.9	0
8	33.8	32.4	29.6	4.2	0
9	39.5	39.9	30.1	5.2	0
10	34.7	38.7	33.6	6.1	0

The Data was Analyzed on the Following rating Scale:

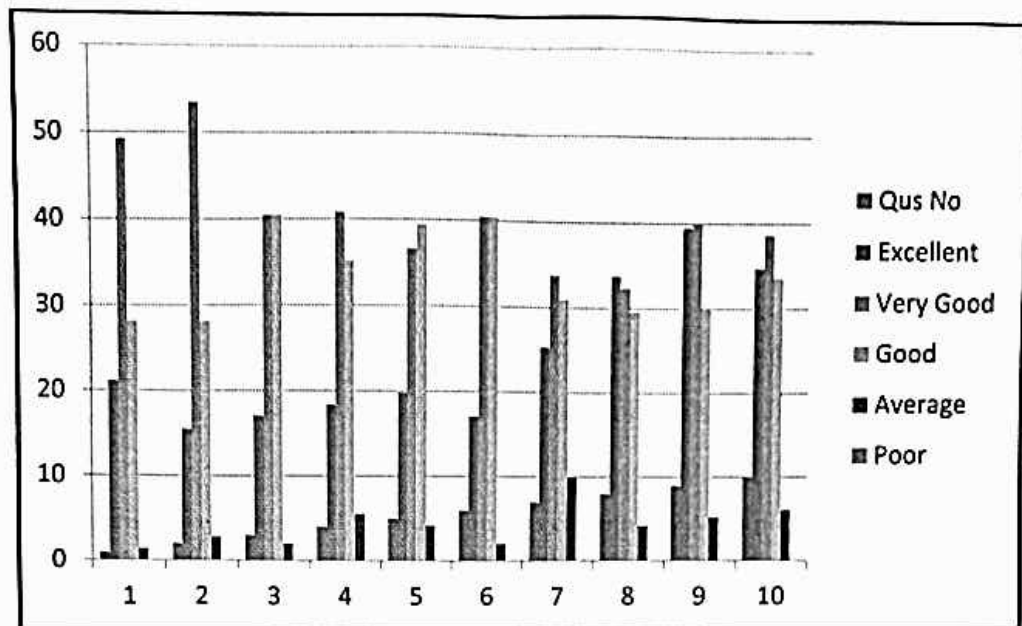
- a) Excellent (5)   b) Very Good (4)   c) Good (3)   d) Average (2)   e) Poor (1)



*Aharan*  
100% Co-ordinator  
Matoshri College of Education  
Eklahare Nashik

*[Signature]*  
**PRINCIPAL**  
Matoshri College of Education  
Eklahare Tal. & Dist. Nashik

The mean score for each of the question was calculated. A graph is plotted to show the comparison between mean score of questions asked



The above graph depicts the comparison between the mean score given to each question it is quite obvious from the graph that the mean value of each question. It is quite obvious from the graph that the mean value of each of the questions is very close. Further it has been observe that mean score of question 10 is highest . That means students opined that the curriculum providing knowledge and skill for a successful career. The identical and minimum mean values are obtained for question no. 4,5,6 and 9, From this data it is interpreted that students expect more oppotunity for extra learning and the sessions coupled with practical examples and applications

*Abhayan*

IQAC Co-ordinator  
Matoshri College of Education  
Eklahare Nashik



*Principal*

PRINCIPAL  
Matoshri College of Education  
Eklahare Tal. & Dist. Nashik